

HOLLER |||||



HOLLER ||||| **PRO**

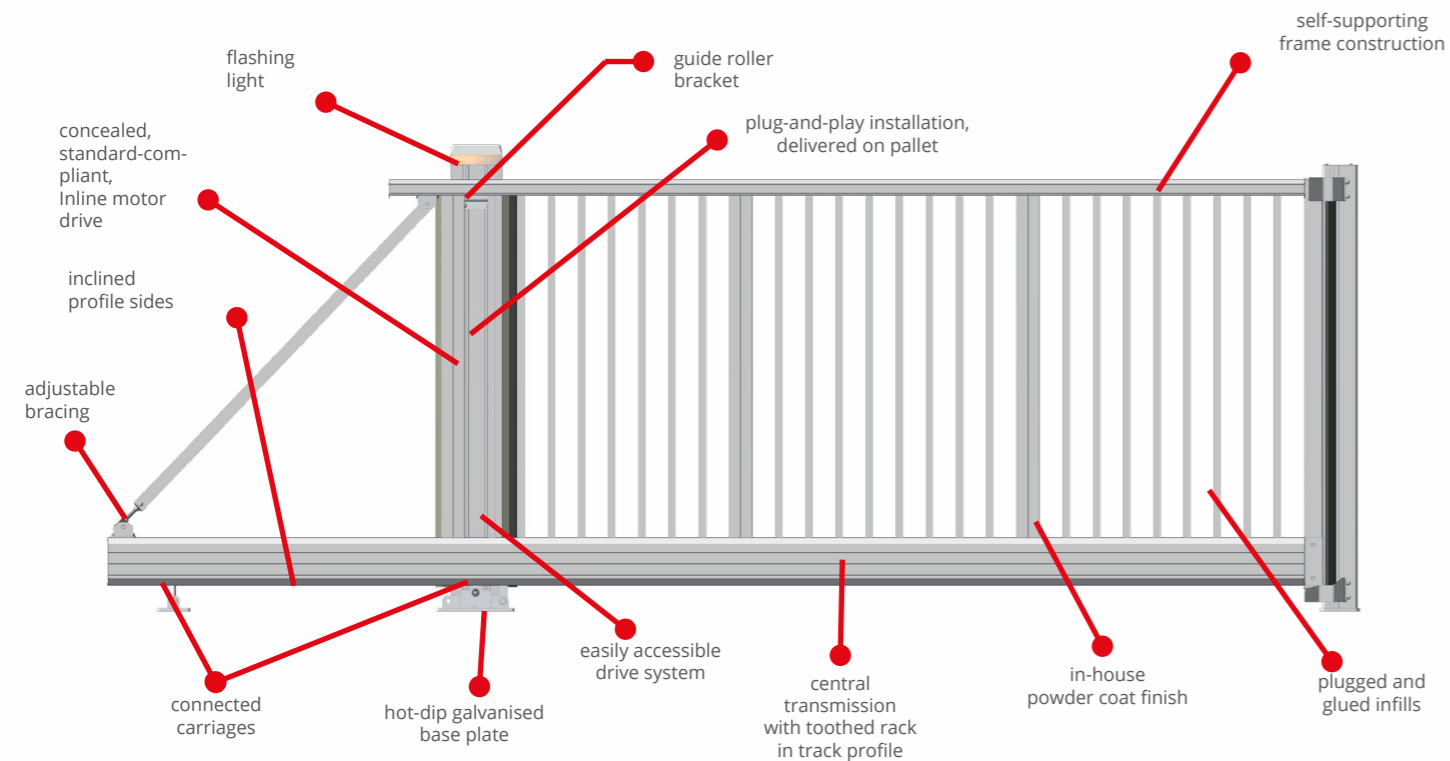
Sliding Gate ECO

Innovation. Stability. Security.

Innovation and Style

The cantilever HOLLER PRO Sliding Gate ECO combines solid craftsmanship, maximum precision, and unique aesthetics. Specially developed aluminium profiles and the use of high-quality materials guarantee durability, security, and unrivalled quality. Tailor-made package solutions at an attractive price create a design statement and aesthetically enhance the appearance of any environment. The gates are manufactured state-of-the-art, following the concepts of Industry 4.0, in one of the most modern sliding gate factories in Europe.

Constructional Design



Aluminium - Highly Robust and Versatile

With 2.7 g/cm³, aluminium only is a third of the weight of steel. As a result, track rollers and support rollers as well as the motor drive are exposed to a significantly lower load. The smooth, clean surface structure of aluminium facilitates a high-quality power coat finish. Aluminium is environmentally friendly and nearly 100% recyclable, and significantly contributes to a better environment.

- Bolted, or partly welded frame construction made of aluminium (track and frame see table of dimensions).
- Gate leaf built with mullions in the frame profile. Infills are fitted in segments.
- Ground clearance 100 mm: Gate height is specified as standard incl. ground clearance.
- Max. bar spacing of 110 mm for increased security.
- Inside roller guide in top profile.
- Inside tracks.
- Connection between front and rear carriage (steel).
- Central toothed rack integrated in track profile, and thus protected from adverse weather and dirt.
- Catch posts and guide posts with base plates in single and double design.
- Max. 250 cycles/day.
- Our vast product range (pedestrian gates, fences, letterboxes and much more) offers numerous combination possibilities that convince both aesthetically and technically.

Dimension table

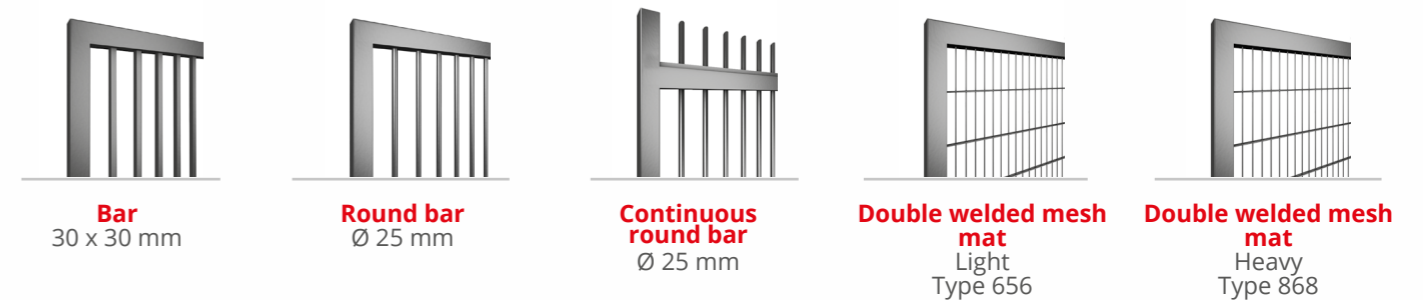
The cantilever HOLLER PRO Sliding Gate ECO is available in the following standard heights: 1,000, 1,250, 1,500, 1,800, 2,000, 2,250 and 2,500 mm.

Post clear width	Gate leaf length	Track	Mullion	Top profile	Guide post	Catch post
3,000	4,400	HST 28 137 x 200 mm	HST 30 100 x 60 mm	HST 29 120 x 65 mm	Single	Single
4,000	5,600					
5,000	6,600					
6,000	8,100					
7,000	9,100					
8,000	10,600	Single	Single			
9,000	11,600					
10,000	13,100					

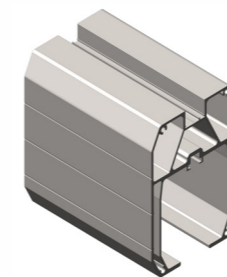
In mm

Design

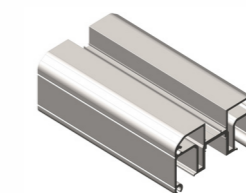
The standard HOLLER PRO Sliding Gate ECO is available in **five** different design options.



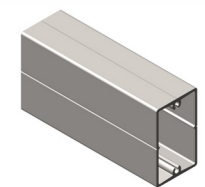
Track



HST 28
W x H 137 x 200



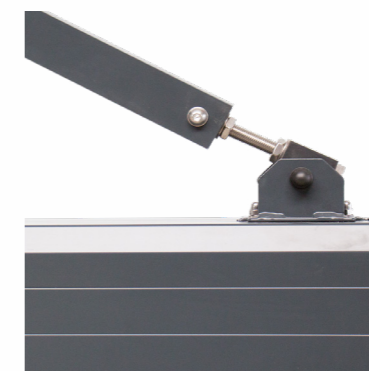
HST 29
B x H 120 x 66



HST 30
B x H 120 x 66



Track, safety contact edge



Adjustable bracing



Guide roller bracket, guide post

Drive system



The HOLLER Inline drive system convinces with first-class workmanship, simple design and high stability. The aesthetically pleasing Inline post offers sufficient space to house the motor drive and the controller, and is a reliable protection against adverse weather and vandalism. The integrated LED flashing light ensures maximum safety in passage areas.

- Post clear width: 3 m to 10 m.
- Gate weight: up to 750 kg.
- Duty cycle: up to 70%.
- Speed: up to 10.8 m/min.

Security and Safety

The bolted aluminium frame and the spike strip, which is supplied on request, guarantee maximum security, and protection. In the event of a power failure, operation is ensured by an integrated emergency rechargeable battery pack. Manually operated gates are additionally equipped with a lock that was specifically developed for sliding gates. All systems are manufactured in accordance with the latest CE mark requirements and the product standard for powered doors and gates EN 13241-1. In particularly sensitive areas, additional accessories are available, such as the HOLLER PRO Safety Plus, a non-pressure sensitive safety contact edge that detects any potential obstructions early before a collision.

Powder Coat Finish and Colours

The HOLLER PRO Sliding Gate ECO is provided with a high-quality powder coat finish which is applied in our own factory. Excellent weather resistance, easy care and scratch-resistant surfaces guarantee beauty and quality for many years.

RAL 5010 Gentian Blue	RAL 6005 Moss Green	RAL 6009 Fir Green	RAL 7016 Anthracite Grey	RAL 7030 Stone Grey
RAL 7040 Window Grey	RAL 7047 Telegrey 4	RAL 8001 Ochre Brown	RAL 9005 Jet Black	RAL 9006 White Aluminium
RAL 9010 Pure White	RAL 9016 Traffic White			

Additional colours available on request.
The colours shown here may differ from the actual colours of the coating.

Certification and Awards

The HOLLERPRO Sliding Gate ECO is manufactured according to strict quality standards and meets all requirements of the applicable standards and regulations.



Picture 1



Picture 2

Electrical Accessories (examples)

Remote control	Key switch	Induction loop	GSM module	Annual and weekly timer	Code keypad

Mechanical Accessories (examples)

Spike strip	Fence connector	Lock including spring mounted adaptor plate	Gate catcher	Post substructures in different heights



Bar 30 x 30 mm

Picture 3



Bar 30 x 30 mm

Picture 6



Round bar 30 x 30 mm

Picture 7



Bar 30 x 30 mm

Picture 8



Bar 30 x 30 mm

Picture 4



Double welded mesh mat Light, type 656

Picture 5



Bar 30 x 30 mm

Picture 9



Continuous bar $\varnothing=25$ mm

Picture 10

Established in 1992, we have been manufacturing high-quality aluminium gates and fences at our Leitring plant in Austria for 30 years.

Curiosity and passionate enthusiasm for technology are our motor and motivation. Our engineering team is focused on the development of innovative solutions but also works on the optimization of existing products to potentially improve them. We trust in traditional craftsmanship and the most advanced technology to deliver tailor-made solutions for a broad product portfolio.

Our highly qualified team accompanies every project from consulting, planning and technical clarification to shipping. We are on hand even after project completion to provide comprehensive support and service.